

Front-to-Back

Single Axle

- For Trucks Using up to 16 feet of Tarp...
TarpMaster® Series Base System: #63075
TarpMaster® 97" Tarp Spool with Wind Deflector, 3-Spring External Mount Pivot Set, Standard Tarp Bow
Options Include:
 - Tarp Spool Only (Built-ins)
 - Tension Bow
 - 30° One-piece Offset Bow Arm



Tandem Axle

- For Trucks Using up to 24 feet of Tarp...
TarpMaster® Series Base System: #64170
TarpMaster® 97" Tarp Spool with Wind Deflector, 4-Spring External Mount Pivot Set, Standard Tarp Bow
Options Include:
 - Tarp Spool Only (Built-ins)
 - Tension Bow
 - 30° One-piece Offset Bow Arm



Multi-Axle

- For Trucks Using up to 26 feet of Tarp...
TarpMaster® Series Base System: #65712
TarpMaster® 97" Tarp Spool with Wind Deflector, 4-Spring External Mount Pivot Set, Tarp Bow
Options Include:
 - Tarp Spool Only (Built-ins)
 - Tension Bow
 - 30° One-piece Offset Bow Arm
 - 5-Year Warranty Upgrade to Super Duty Gear Motor
- For Trucks Using Over 24' feet of Tarp...
Super Duty Series Base System: #65710
Super Duty 97" Tarp Spool with Wind Deflector, 5-Spring External Mount Pivot Set, Tarp Bow
Options Include:
 - Tension Bow
 - 30° One-piece Offset Bow Arm
 - 5-Spring Under Body Mount Pivot



Trailer: Straight Arm

- For Trailers Using up to 44 feet of Tarp...
Super Duty Trailer Series Base System:
Super Duty 92" Tarp Spool with Full Housing, Under Body Mount Pivot Set, Wide Tarp Bow Set



Trailer: Knuckle Arm

- For Trailers Using up to 44 feet of Tarp...
Super Duty Trailer Series Base Knuckle System:
Super Duty 92" Tarp Spool with Full Housing, Under Body Mount Knuckle Pivot Set, Wide Tarp Bow Set

ite.com

Roll-Rite® — Clearly the Best.
1-800-297-9905

www.RollRite.com

Truck & Trailer Tarp Systems:

Roll-Rite® Front-to-Back

...Dump Truck & Trailer
Tarp Systems



Roll-Rite® Tarps:

Leading design and durability in truck tarps. It starts with premium fabrics and ends with detailed fabrication. With state-of-the-art fabrication techniques, Roll-Rite® delivers the most durable tarps with a longer life-cycle.

- Single Piece Construction
- Reinforced Corners and Seams (Double-Stitched or Welded)
- Rear Tarp Rod Pocket Completely Lined And Reinforced With Grommets

Premium Mesh



- **Strongest mesh** fabric you can get in the industry for general tarping
- Premium 7.7 oz. woven fabric made of two, 1,000 denier polyester twisted strands coated with UV resistant PVC
- 7.5x5 weave contains even fine particles yet breathes enough to minimize flapping
- Not broken down by sunlight like common PVC coated materials
- Edges bound to add strength and provide a finished appearance

Heavy Duty Asphalt



- Premium 18 oz. vinyl with heat welded finished edges
- Heavier weight minimizes tarp flapping in high wind
- Waterproof
- Grommets placed every 24" down the sides
- Solid tarps should be tied down using provided grommets. This will help prevent wind damage to components caused by flopping tarps



Stock Tarps:

Call for additional tarps & custom order specifications.

PREMIUM MESH

Tarp Length	84" W	88" W
10'	81100	81101
12'	81120	81121
14'	81140	81141
16'	81160	81161
18'	81180	81181
20'	81200	81201
22'	81220	81221
24'	81240	81241
26'	81240	81261
28'	81280	
30'	81300	88" Wide Non-Stock in 28' - 46' Lengths
32'	81320	
34'	81340	
36'	81360	Custom Order Only Please
38'	81380	
40'	81400	
42'	81420	
44'	81440	
46'	81460	

HEAVY DUTY ASPHALT

Tarp Length	84" W	88" W
10'	83100	---
12'	83120	---
14'	83140	---
16'	83160	83161
18'	83180	83181
20'	83200	83201
22'	83220	83221
24'	83240	83241
26'	83260	83261
28'	83280	88" Wide Custom Order
30'	83300	
32'	83320	



AUTHORIZED DISTRIBUTOR:

Roll-Rite® FTB/Dump Trucks & Trailers 6PSB.0709



Electric Tarp Systems

www.RollRite.com

Roll-Rite®



Super Duty

TarpMaster®

The Electric Motors:

Mastering Gear Motor Technology... The TarpMaster® is today's industry standard for general purpose tarping and is designed to power systems using up to 24 feet of tarp. Our patented Super Duty features a spur and helical gear configuration with forged heat treated gears and precision ground bearings for a much longer-life transmission.

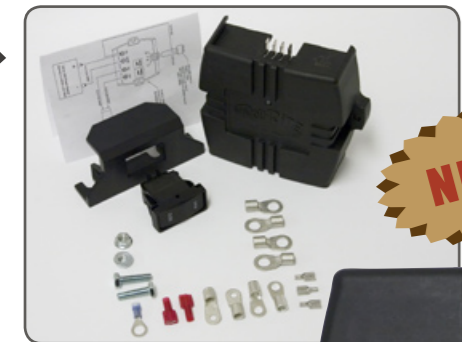
- **Motors Specifically Engineered for Tarping...** the tarp industry's leading motors designed especially for high-torque demands
- **High-Polished...** All our motors feature chrome-plated casing, designed for virtually corrosion-proof protection, adds a distinctive profile for a professional appearance.
- **Industry Leading Warranty...** The TarpMaster® is features a 3-year non-prorated warranty. The Super Duty carries the industry's only 5-year non-prorated warranty against premature wearout.

The Electric Kit w/ Solid State Relay:

Our new rocker switch electric kit w/ solid state relay is included with our TarpMaster® Series and Super Duty Series systems.

Why Solid State?: The solid state relay offers advanced "smart" features and benefits including:

- **Advanced Motor & Relay Protection...** Built-in circuit protection and non-switching/non-arcing feature protect motor and relay contacts in case of unforeseen power failures.
- **No-Load & Voltage Detection...** detects and auto adjusts unit to a 12V or 24V system, detects and indicates low voltage to prevent battery and motor damage.
- **Diagnostic LED...** Bi-color light indicates operation or fault conditions for easy trouble-shooting. Additional spade outputs available for remote LED (in-cab)
- **Waterproof/Dustproof...** Relay is potted for corrosion resistance
- **Longer Life...** 5-Year relay warranty



NEW!

Roll-Rite® Solid State Relay

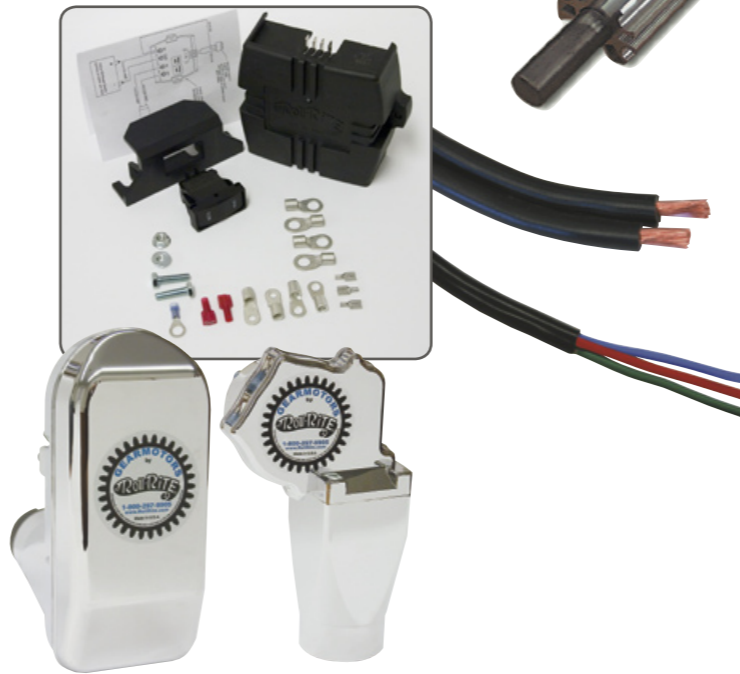


Front-to-Back

The Tarp Spool Kits:

Tarp Spool Kits come complete with the all the components you need so you're ready for installation

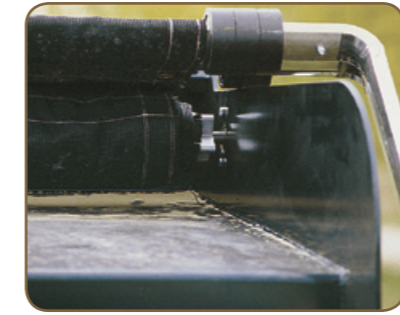
- **Tarp Motor...** either the TarpMaster® or Super Duty to meet your torque needs
- **Pre-Threaded Tarp Axle w/ Stub Shaft...** ready for installation. Comes pre-assembled in full housing spool kits
- **Electric Kit...** our Rocker Switch Electric Kit w/ Solid State Relay
- **Wiring...** 14ga 3-Conductor Wire (15 feet) and 6ga Dual Conductor Wire (60 feet for dump trucks; 85 feet for trailers)
- **Mounting Hardware...** varies based on spool style



- **Full Housing...** for maximum protection, easy pre-assembled installation



- **Wind Deflector...** standard wind & tarp protection

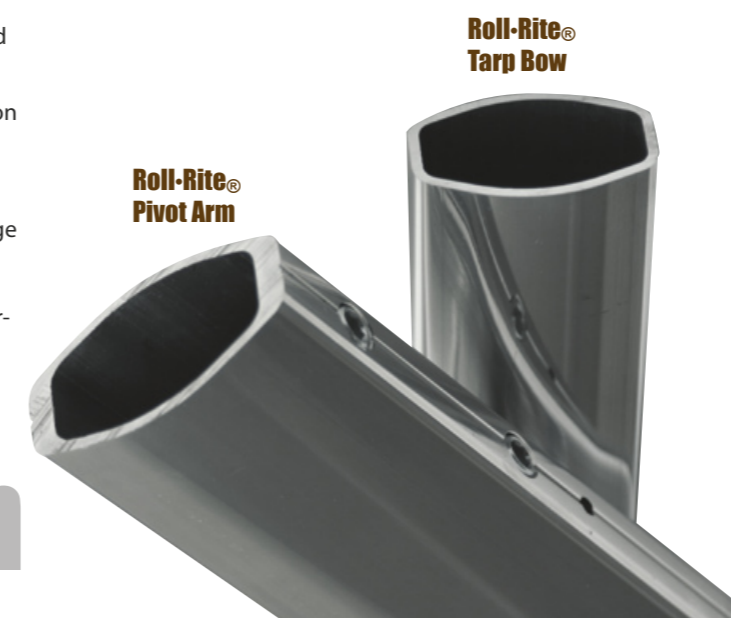


- **Tarp Spool Only ...** for built-ins

The Roll-Rite® Arms:

Roll-Rite® tarp arms consist of a lower pivot arm and upper tarp bow. Each are made from a specially treated, high strength extruded aluminum alloy.

- **Strongest Arms...** Patented arm design and special extrusion delivers the lightest, most durable tarp arm with maximum strength to weight ratio.
- **Telescopic Fit...** Allows for easy installation and widest range of system variations
- **High Polished...** Each arm is buffed and polished to a mirror-like finish



Roll-Rite® Pivot Arm

Roll-Rite® Tarp Bow

Tarp Systems

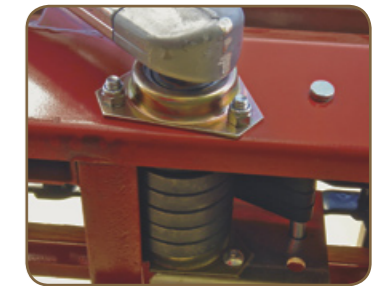
The Pivot Mounts:



- **External...** Spiral torsion 3, 4, or 5-spring pivots are suited for dump trucks using tarps from 16' to 26'. Optional mounting brackets are available



- **Under Body...** Greasable roller bearing pivot mount offers a slimmer profile than external mount, available with straight or knuckle arms



- **Side-Rail...** slimmest roller bearing profile designed for open side rails allowing torsion springs to be mounted within the side rail, available with straight or knuckle arms



- **The Spiral Torsion Spring...**

our heat treated, teflon coated springs, featured in all our pivot mount styles, are used in multiples of 4 to 16 for proper pressure on every truck or trailer length



The 30° Offset Bow Arms vs. Offset Elbows:

- **Angles...** pivot arm profile to avoid load zone or clear cab doors
- **30° One-Piece Design...** 105-1/2" aluminum bow arm with pre-bent offset available in a quick-pick system package for a more finished appearance
- **30° or 45° Elbows...** offers widest range of adjustability for a customized fit



The Tension Bow:

- **Secure...** tarp behind cab guards measuring over 8" tall
- **30° or 45° Elbows...** can be used with both the tarp and tension bow for a customized fit



Roll-Rite® — Clearly the Best.
1-800-297-9905